

These are the four vendor halls at the fairgrounds. Each has its pros and cons. We have adjusted the pricing based on several factors. The halls are 2 stories, so Hall 1 is above Hall 3 and Hall 2 is above Hall 4. All halls have exterior access doors that will be open during the show. Attendees can enter and exit any of these doors and we will have activities/events on all 4 sides of the buildings making it a 360 degree experience. The buildings are set on a slope, so no one has to use stairs to reach any of the halls even though they are 2 stories tall. These pictures were taken without all the lights being on in all the halls. We've tried to think of different table/space combinations and list them, but you can contact us about something you want to do with your space.

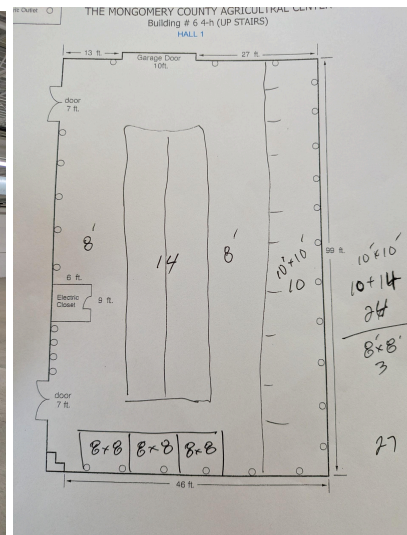
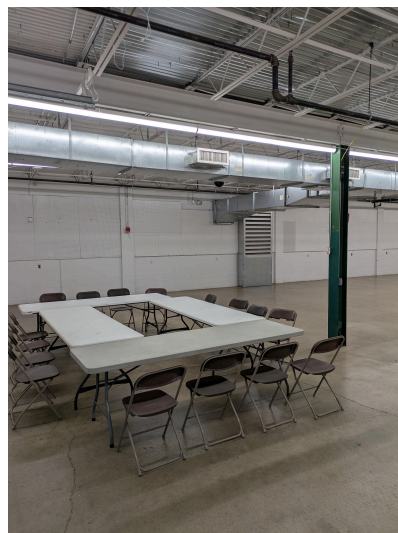
HALL 1 is a top floor room about 100 feet by 46 feet. We will tentatively have: 24 spaces 10' x 10' and 3 spaces 8' x 8'. It has electricity on the walls, and some electricity on the green support columns. It has the opportunity to request an end unit on the central group, or order two of those end spaces to have a 10' x 20' end cap.

10' x 10' space base price \$60 **about 10 remaining**

~~40' x 10' end space base price \$65~~ **SOLD OUT**

~~10' x 20' (2 spaces) end cap base price \$125~~

~~8' x 8' space base price \$50~~ **SOLD OUT**



HALL 2 is a top floor room about 110 feet by 70 feet.. It has the highest ceilings and lots of natural light. The floor is a wood basketball court. It has accessible electricity on the walls and hanging from the ceiling. It will tentatively have 3 8' x 8' spaces, 1 10' x 8' space, and 36 10' x 10' spaces. It has the opportunity to request an end unit on the central group, or order two of those end spaces to have a 10' x 20' end cap, or a side of 3 for a 10' x 30' space! It also has a single weird corner space that would be about 10' x 18' if you could use that configuration.

10' x 10' space base price \$65 **about 12 remaining**

~~10' x 8' space base price \$55~~ **SOLD OUT**

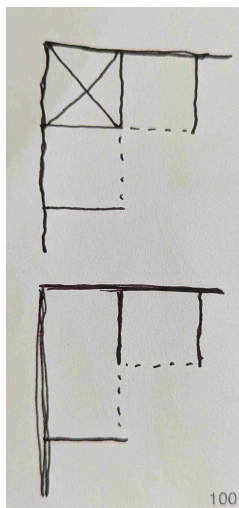
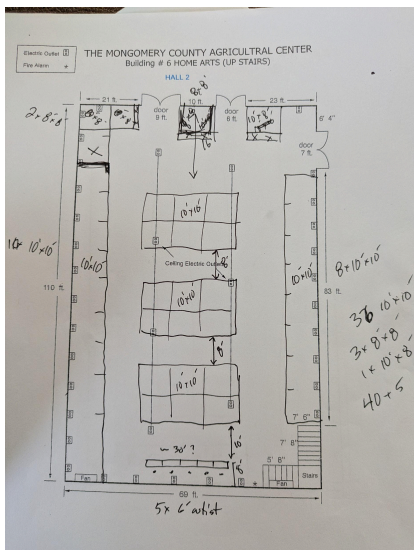
~~8' x 8' space base price \$50~~ **SOLD OUT**

10' x 10' end space base price \$70 **ONE LEFT!**

~~10' x 20' (2 spaces) end cap base price \$135~~ **GONE**

~~10' x 30' (3 spaces) entire side base price \$190~~

10' x 18' weird corner space base price \$60



HALL 3 is a lower level hall about 110 feet by 70 feet. It has electricity only on the walls. It has an advantage of being adjacent to the main bathrooms. We will tentatively have 17 10' x 10' spaces, 11 8' x 8' spaces, and a 10' extra wide space. This floor, in the upper left corner, has an opportunity to utilize a dead space corner (see diagram) can you use this space?

10' x 10' space base price \$45

8' x 8' space base price \$40 4 remain

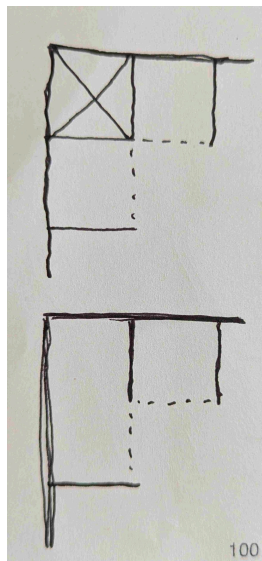
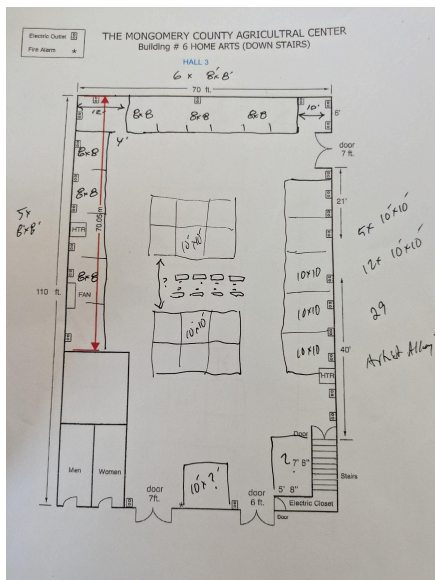
10' x 10' end space base price \$50 2 remain

10' x 20' (2 spaces) end cap base price \$95 2 remain

10' x 30' (3 spaces) entire side base price \$135 2 remain

10' extra wide space base price \$50

Weird corner space base price \$45



HALL 4 is a lower level hall about 100 feet by 50 feet. It has electricity only on the walls and some in the center. We will tentatively have 12 10' x 8' spaces, 22 8' x 8' spaces, and a 10' extra wide space. This floor, in the upper left corner, has an opportunity to utilize a dead space corner (see diagram) can you use this space?

10' x 8' space base price \$45

10' extra wide space base price \$50

8' x 8' space base price \$40

10' x 8' end space base price \$50

10' x 16' (2 spaces) end cap base price \$95

Weird corner space base price \$45

